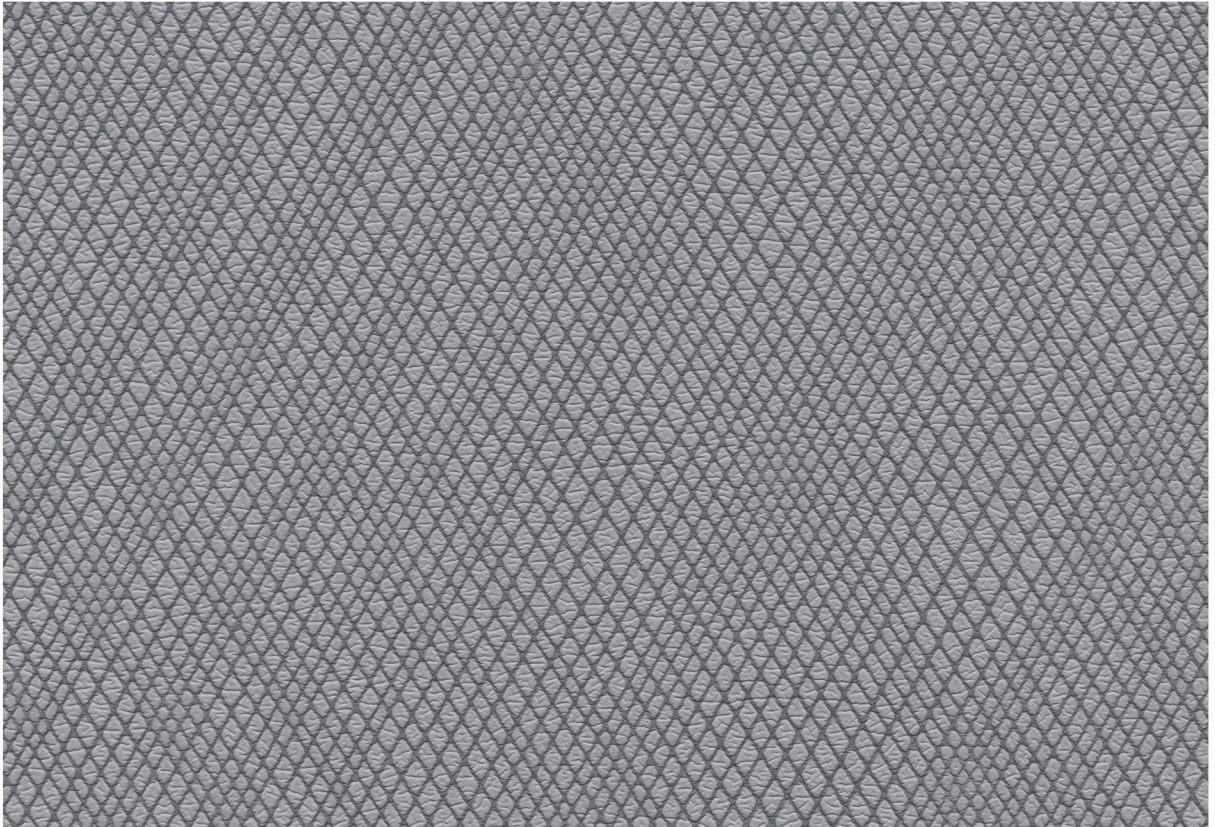
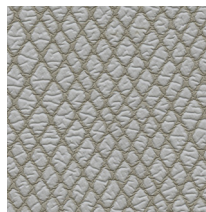


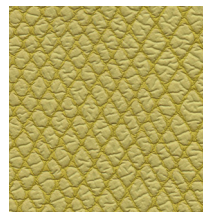
Wired — Ultrafabrics



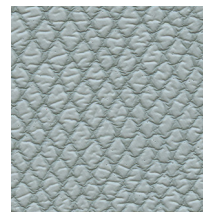
531-5309 Glisten Grey



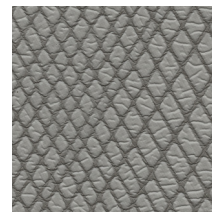
531-3283 Butter Cookie



531-5266 Lemon Drop



531-2591 Baby Blue



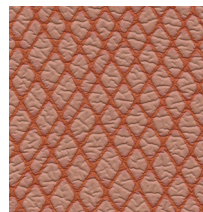
531-6568 Faded Stone



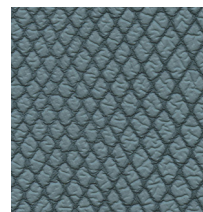
531-3282 Milkshake



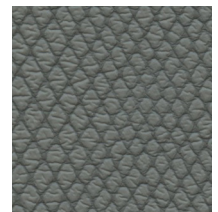
531-3284 Sugar Cone



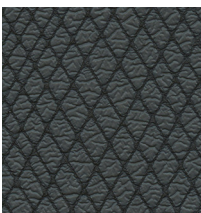
531-8236 Marmalade



531-2592 Aquarius



531-6563 Dust



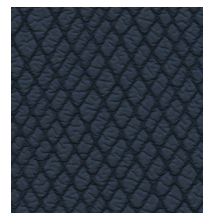
531-9421 Blackjack



531-3285 Kahlua



531-4306 Rio



531-2779 Hale Navy



531-9326 Acai



Wired from Ultrafabrics

Application

Interior Upholstery

General Specifications

Composition:

100% Polycarbonate Polyurethane Surface
65% Recycled Polyester, 35% Rayon Backing

Weight:

Approx. 10.3 oz. Per Square Yard
Approx. 350 Grams Per Square Metre

Thickness:

Approx. 1.1 Millimetres

Width:

54 Inches / 137 Centimetres

Repeat:

27.55" V x 16.61" H / 700mm V x 422mm H

Performance

Abrasion:

ASTM D4157 / 400,000 Double Rubs (Wyzenbeek)*
BS EN ISO 12947-2 / 200,000 Rubs (Martindale)*
*meets or exceeds

Hydrolysis:

16 Weeks
ASTM D3690 Sect. 6.11 (Hydrolytic Stability)
ISO 1419 Method C (Accelerated Ageing)

Adhesion of Coating: ASTM D751

Tear Strength: ASTM D2261

Breaking Strength: ASTM D751

Tensile Strength: BS EN ISO 1421

Colorfastness

Light: AATCC 16.3, 200 Hours, Grade 4
ISO 105 B02, Grade 6

Crocking: AATCC 8, Grade 4-5 Wet & Dry

Flammability Requirements

- ASTM E84 (Adhered) - Class A
- CA TB 117-2013 - Pass
- FMVSS 302 - Pass
- NFPA 260 - Class 1
- UFAC - Class 1

These fabrics, when treated and/or used with other compatible furniture components, have been shown to perform under the fire test conditions of:

- ASTM E84 (Unadhered)
- IMO FTPC Part 8
- BS EN 1021 Parts 1 & 2
- BS 5852 Source 0, 1 & 5 (Cig, Match & Crib 5)

For more information on certifications and standards, sustainability, as well as cleaning and care instructions, please visit our website.



ultrafabricsinc.com

Ultrafabrics® and logo are registered trademarks of Ultrafabrics Inc. Made in Japan.

