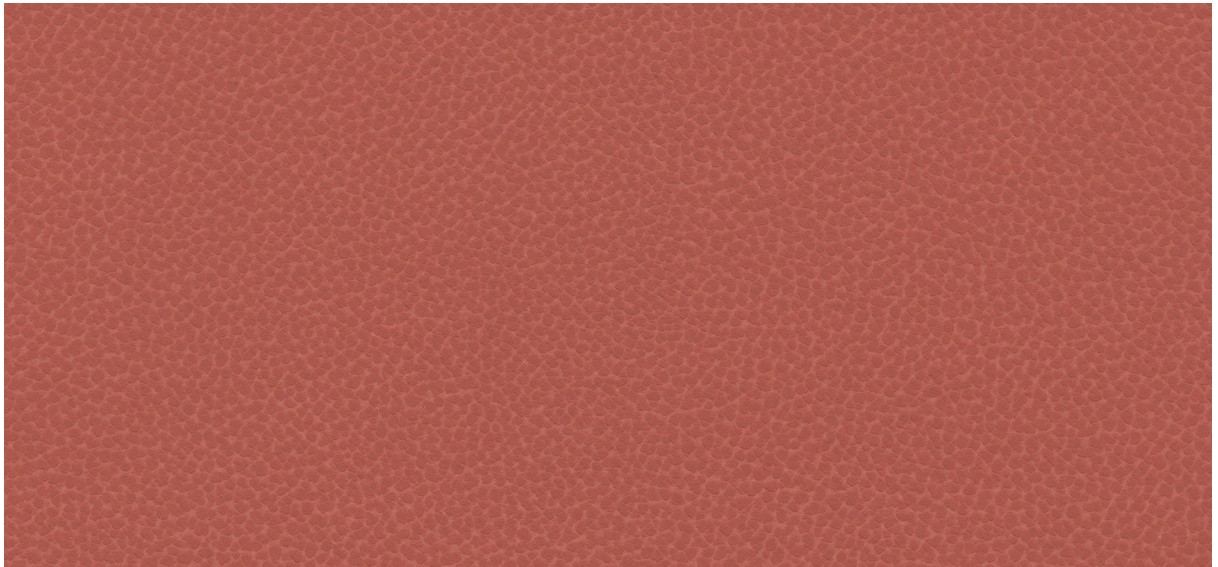
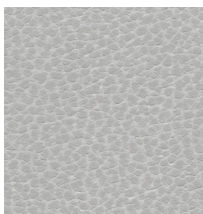


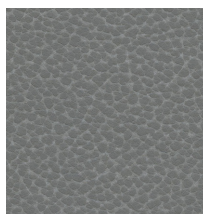
# Reef Pro — Ultrafabrics



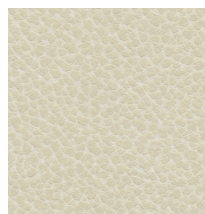
624-1414 Coral



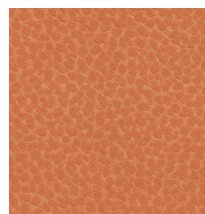
624-2632 Beluga



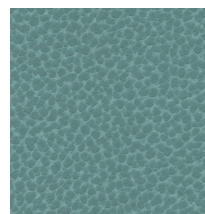
624-3792 Hammerhead



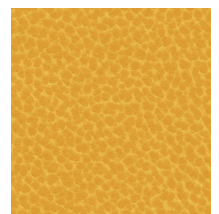
624-3487 Sea Star



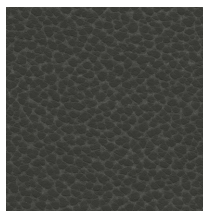
624-1415 Clownfish



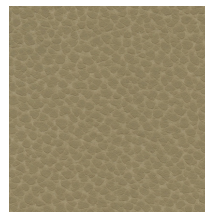
624-4316 Caribbean



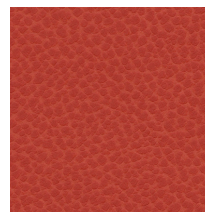
624-5246 Submarine



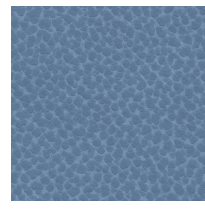
624-3841 Stingray



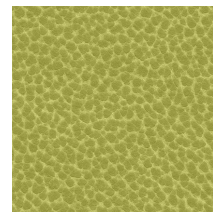
624-3561 Boardwalk



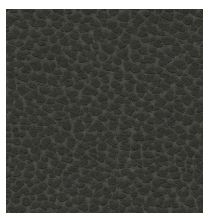
624-1408 Lobster



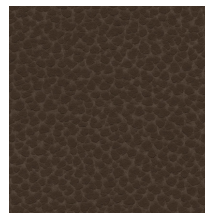
624-2722 Saltwater



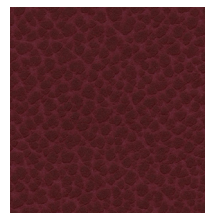
624-4434 Seagrass



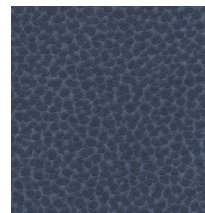
624-5288 Squid



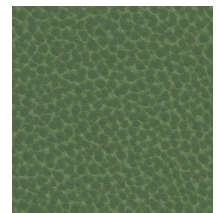
624-3536 Lionfish



624-1413 Octopus



624-2627 Captain



624-4392 Algae



# Reef Pro from Ultrafabrics

## Application

Interior Upholstery

## General Specifications

### Composition:

100% Polycarbonate Polyurethane Surface  
65% Polyester, 35% Rayon Backing

### Weight:

Approx. 12.1 oz. Per Square Yard  
Approx. 410 Grams Per Square Metre

### Thickness:

Approx. 1.15 Millimetres

### Width:

54 Inches / 137 Centimetres

### Repeat:

None

## Performance

### Abrasion:

ASTM D4157 / 400,000 Double Rubs (Wyzenbeek)\*  
BS EN ISO 12947-2 / 200,000 Rubs (Martindale)\*  
\*meets or exceeds

### Hydrolysis:

16 Weeks  
ASTM D3690 Sect. 6.11 (Hydrolytic Stability)  
ISO 1419 Method C (Accelerated Ageing)

Adhesion of Coating: ASTM D751

Tear Strength: ASTM D2261

Breaking Strength: ASTM D751

Seam Strength: ASTM D751 (Tack Tear)

Tensile Strength: BS EN ISO 1421

## Colorfastness

Light: AATCC 16.3, 200 Hours, Grade 4  
ISO 105 B02, Grade 6  
Crocking: AATCC 8, Grade 4-5 Wet & Dry

## Flammability Requirements

- ASTM E84 (Adhered) - Class A
- CA TB 117-2013 - Pass
- FMVSS 302 - Pass
- NFPA 260 - Class 1
- UFAC - Class 1
- AB 2998

These fabrics, when treated and/or used with other compatible furniture components, have been shown to perform under the fire test conditions of:

- ASTM E84 (Unadhered)
- BS 5852 Source 0, 1 & 5 (Cig, Match & Crib 5)
- IMO FTPC Part 8
- BS EN 1021 Parts 1 & 2

## Reef Pro Resists:

- Ballpoint ink
- Blood
- Mustard and Ketchup
- Betadine
- Denim\*
- Red Wine

\* Removal of denim dye may vary depending on the period of time the stain sets in. While Reef Pro offers excellent protection, full removal is not guaranteed.

For more information on certifications and standards, sustainability, as well as cleaning and care instructions, please visit our website.



[ultrafabricsinc.com](http://ultrafabricsinc.com)

Ultrafabrics® and logo are registered trademarks of Ultrafabrics Inc. Made in Japan.

