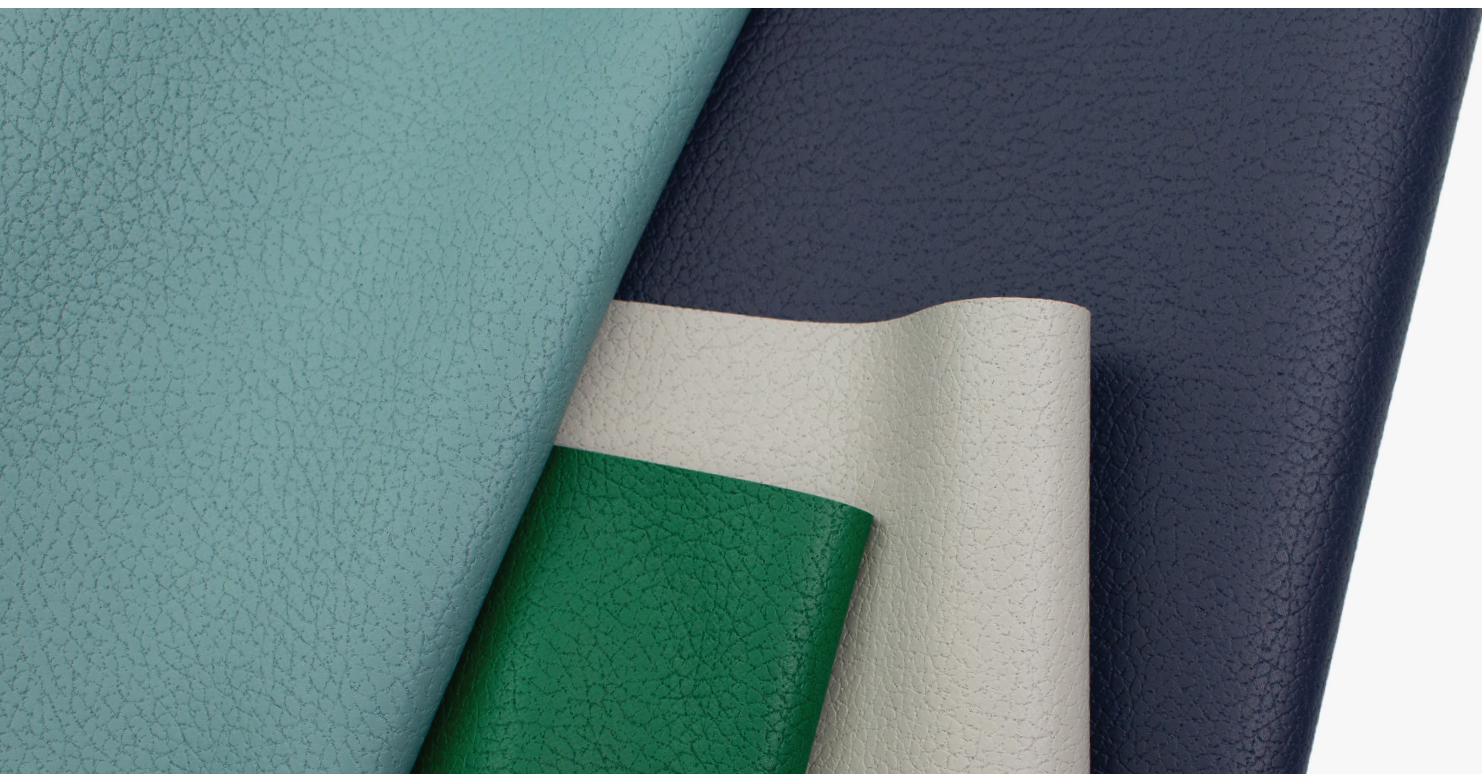
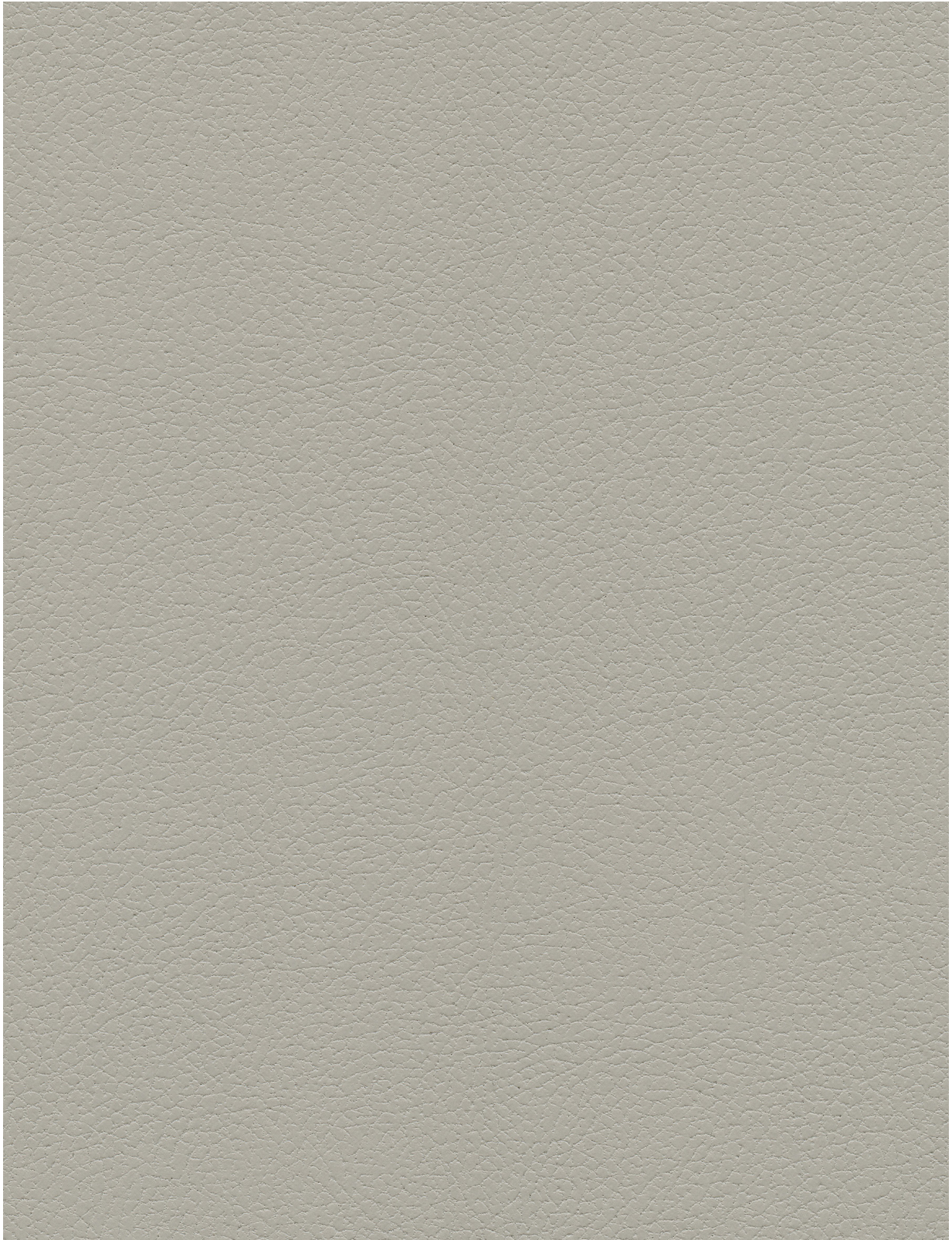


Brisa — Ultrafabrics



Acoustical properties • Breathable technology



533-3276 Wishbone



533-5747 White



533-3234 Cookie Dough



533-3019 Birch



533-3866 French Vanilla



533-3823 Aztec



533-3277 Moon



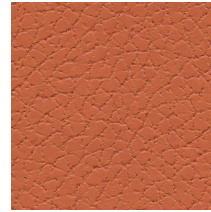
533-3915 Putty



533-3822 Bone



533-3863 Cream



533-8202 Koi



533-5820 Quicksilver



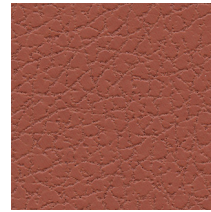
533-3914 Bark



533-3864 Desert Clay



533-3867 Golden



533-8245 Cinnabar



533-5802 Ash



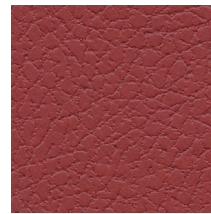
533-3275 Gravel



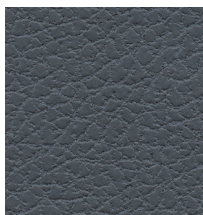
533-3946 New Sand



533-3051 Ginger



533-1383 Pompeiiian Red



533-5703 Wrought Iron



533-3022 Shiitake



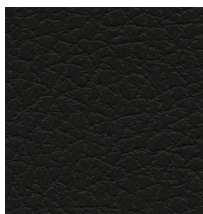
533-3200 Peat



533-3591 Caramel



533-1373 Salsa



533-5749 Black Onyx



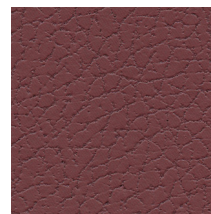
533-3023 Coffee Bean



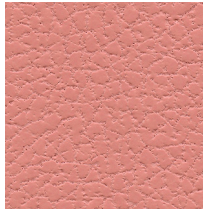
533-3913 Truffle



533-3825 Canyon



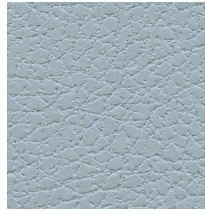
533-1361 Beet Root



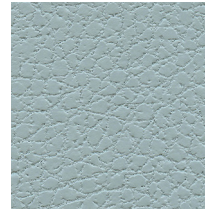
533-8203 Flamingo



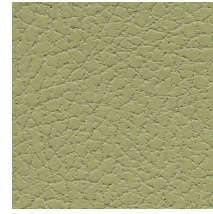
533-2645 Cambridge Blue



533-3272 Iceberg



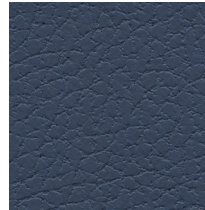
533-2698 Sterling Blue



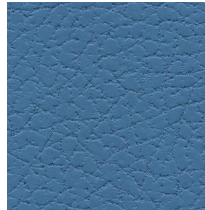
303-4510 Celery



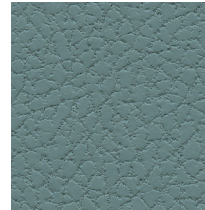
533-1359 Strawberry



533-2620 Evening Blue



533-2523 Turq



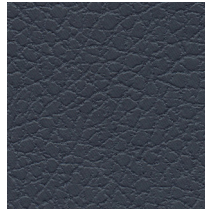
533-2697 Mineral



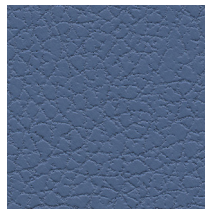
533-4448 Apple Green



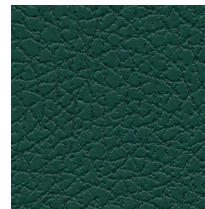
533-1344 Rose Red



533-2694 Night Navy



533-2696 Skyway



533-4303 Seaweed



533-4487 Sage



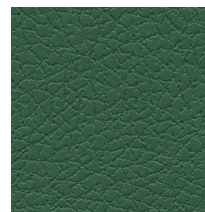
533-9374 Blossom



533-2683 Indigo



533-2621 Blue Sea



533-4302 Esmeralda



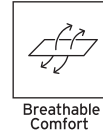
533-4488 Olive



533-9400 Cabernet



533-9378 Abyss



Brisa from Ultrafabrics

Applications

Interior Upholstery, Vertical Surfaces

General Specifications

Composition:

100% Polycarbonate Polyurethane Surface
65% Polyester, 35% Rayon Backing

Weight:

Approx. 8.9 oz. Per Square Yard
Approx. 300 Grams Per Square Metre

Thickness:

Approx. 0.95 Millimetres

Width:

54 Inches / 137 Centimetres

Repeat:

None

Performance

Abrasion:

ASTM D4157 / 300,000 Double Rubs (Wyzenbeek)*
BS EN ISO 12947-2 / 160,000 Rubs (Martindale)*
*meets or exceeds

Hydrolysis:

14+ Weeks
ASTM D3690 Sect. 6.11 (Hydrolytic Stability)
ISO 1419 Method C (Accelerated Ageing)

Adhesion of Coating: ASTM D751

Tear Strength: ASTM D2261

Breaking Strength: ASTM D5034

Tensile Strength: BS EN ISO 1421

Air Permeability: ASTM D737

Sound Absorption: ASTM C423

Colorfastness

Light Fastness: AATCC 16.3, 200 Hours, Grade 4
ISO 105 B02, Grade 6

Crocking: AATCC 8, Grade 4-5 Wet & Dry

Flammability Requirements

- ASTM E84 (Adhered) - Class A
- CA TB 117 - Pass
- FMVSS 302 & 95/28 Annex IV - Pass
- NFPA 260 - Class 1
- UFAC - Class 1

These fabrics, when treated and/or used with other compatible furniture components, have been shown to perform under the fire test conditions of:

- ASTM E84 (Unadhered)
- BS 5852 Source 0, 1 & 5 (Cig, Match & Crib 5)
- IMO FTPC Part 8

For more information on certifications and standards, sustainability, as well as cleaning and care instructions, please visit our website.

* Only in North America

