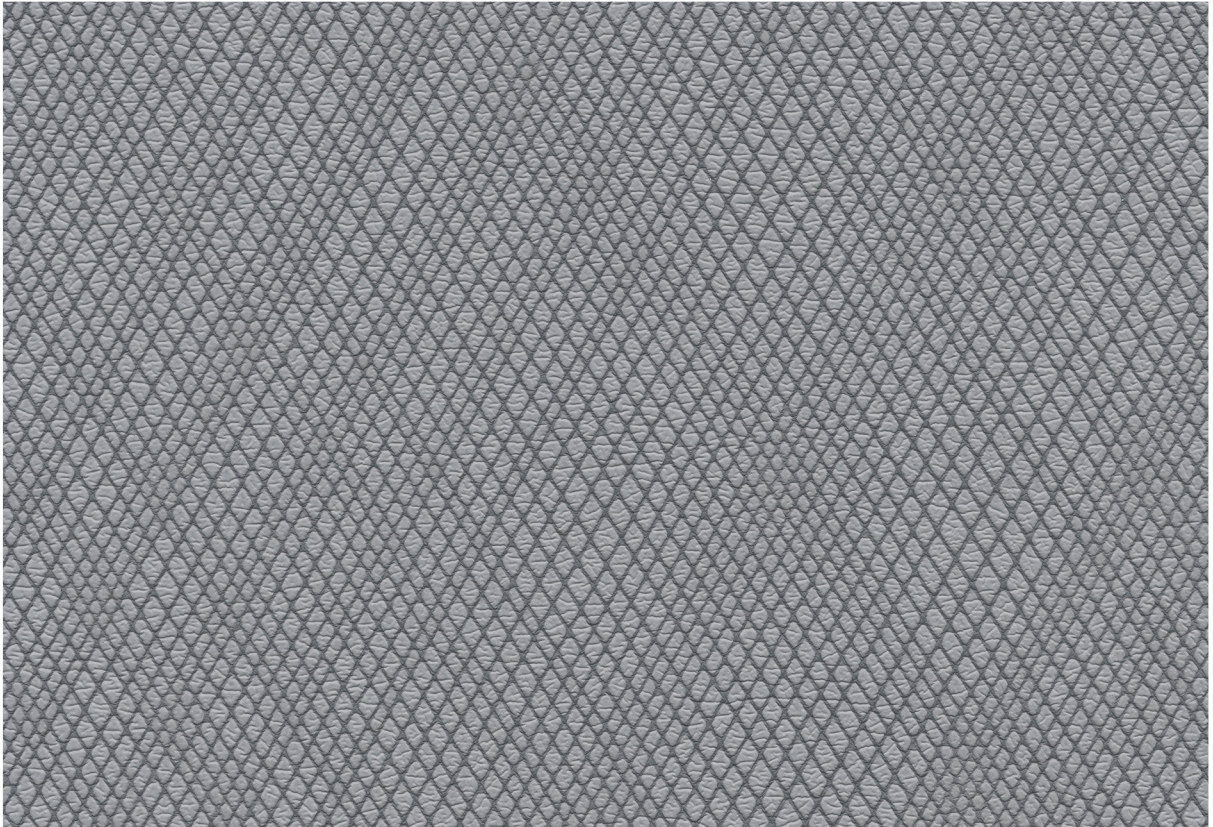
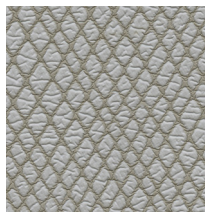


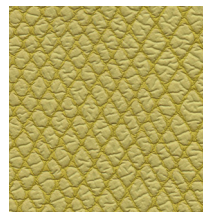
# Wired — Ultrafabrics



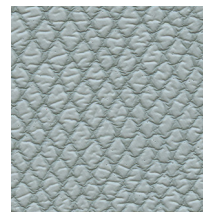
531-5309 Glisten Grey



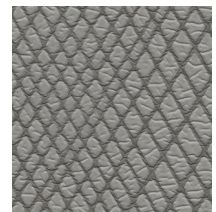
531-3283 Butter Cookie



531-5266 Lemon Drop



531-2591 Baby Blue



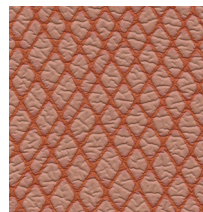
531-6568 Faded Stone



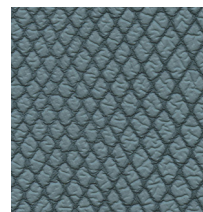
531-3282 Milkshake



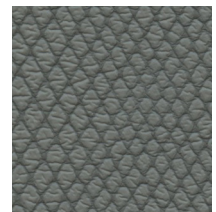
531-3284 Sugar Cone



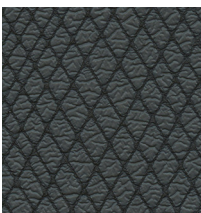
531-8236 Marmalade



531-2592 Aquarius



531-6563 Dust



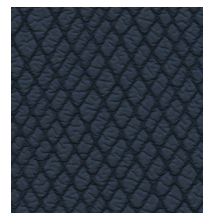
531-9421 Blackjack



531-3285 Kahlua



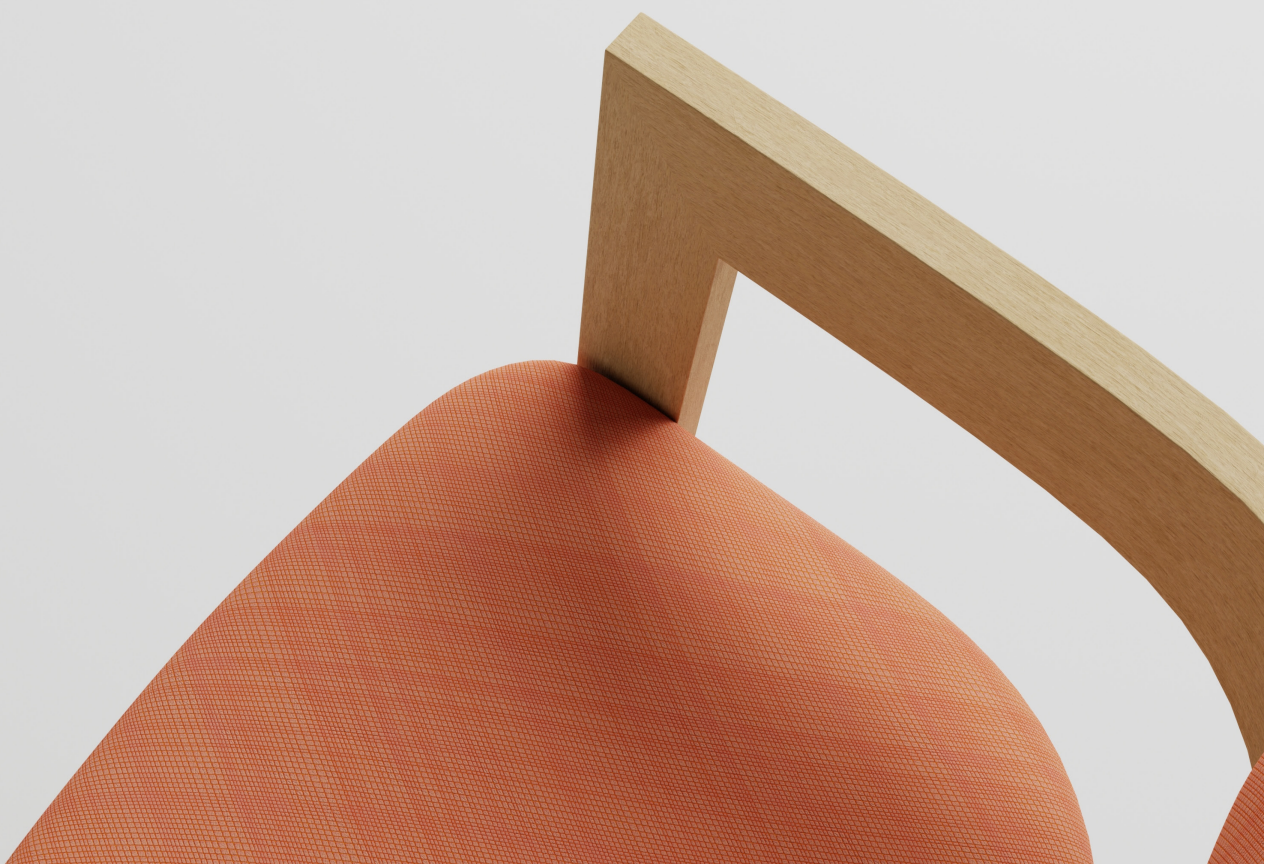
531-4306 Rio



531-2779 Hale Navy



531-9326 Acai



## Applications

Interior Upholstery

## General Specifications

### Composition:

100% Polycarbonate Polyurethane Surface  
65% Recycled Polyester, 35% FSC/PEFC  
Certified Rayon Backing

### Width:

54 Inches / 137 Centimetres

### Repeat:

27.55"V x 16.61"H / 700mm V x 422mm H

## Performance

### Abrasion:

ASTM D4157 / 400,000 Double Rubs (Wyzenbeek)\*  
BS EN ISO 12947-2 / 200,000 Rubs (Martindale)\*  
\*meets or exceeds

### Hydrolysis:

16 Weeks  
ASTM D3690 Sect. 6.11 (Hydrolytic Stability)  
ISO 1419 Method C (Accelerated Ageing)

## Colorfastness

Light: AATCC 16.3, 200 Hours, Grade 4  
ISO 105 B02, Grade 6  
Crocking: AATCC 8, Grade 4-5 Wet & Dry

## Environmental

No intentionally added PFAS  
SCS Indoor Advantage Gold certified  
REACH compliant  
Does not contain Red List chemicals



Scan QR code for a full list of specifications.

For more information on certifications and standards, sustainability, as well as cleaning and care instructions, please visit our website.



[ultrafabricsinc.com](https://ultrafabricsinc.com)

Ultrafabrics® and logo, are registered trademarks of Ultrafabrics Inc. Made in Japan.

