

Light and  
Airy Comfort  
with Ellora




# Inspired by Nature, Designed for Living

For over 25 years, Ultrafabrics has focused on innovation, excellence, and the continuous pursuit of perfection in the world of high-tech performance fabrics.

Continuing that legacy, we're proud to introduce Ellora, our latest evolution featuring the same breathable technology you trust in our Brisa collections.





Ellora embodies the perfect blend of aesthetics and functionality. Taking its meaning from the word “cloud”, its unique breathable technology ensures optimal comfort, making it an ideal choice for those who seek both style and substance.

The combination of texture, durability, and functionality makes Ellora a premium choice for any space, including seating and acoustic applications.

# A Palette of Serenity

Ellora embodies the beauty and grace of clouds drifting through a blue sky. The color palette draws inspiration from the dynamic beauty of nature, where color remains a constant and predictable element.



Mixing soft warm neutrals, mid-tone earthy hues, and rich jewel tones, these colors seamlessly connect with existing Brisa shades, allowing for effortless layering and versatility in any space.



# Airy Neutrals

Evoke a sense of calmness, serenity, and openness, creating a tranquil and inviting atmosphere.



**604-3563**  
Dawn Mist

**604-3562**  
Soft Almond

**604-4024**  
Whale Bone

**604-4025**  
Coffee Cream

# Golden Rays

Envelope a space  
with the richness and  
cozy charm of the fall,  
creating warmth.

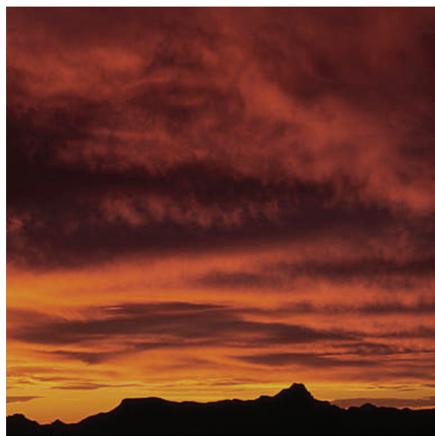


**604-3564**  
Roast Chestnut

**604-8276**  
Sunset Gold

**604-4024**  
Whale Bone

# Earthbound Skies



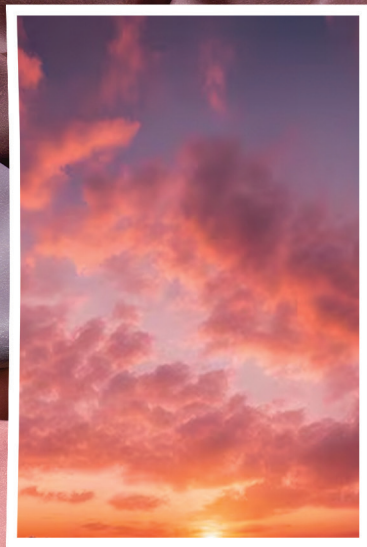
Provides a sense of stability and comfort  
that feels both natural and nurturing.

**604-8278**  
Clay Pot

**604-8277**  
Auburn

**604-3564**  
Roast Chestnut

# Plum Horizons



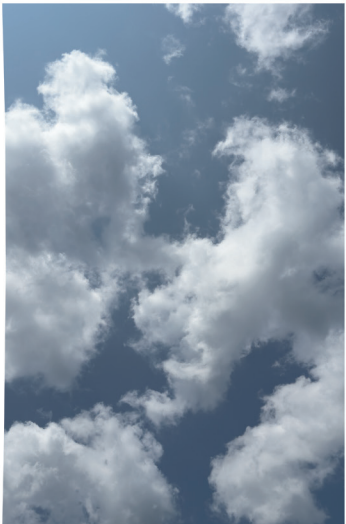
Add a touch of depth and opulence  
that feels both bold and elegant.

**604-9437**  
Fine Wine

**604-9438**  
English Violet

**604-6599**  
Rose Water

# Ocean Breezes



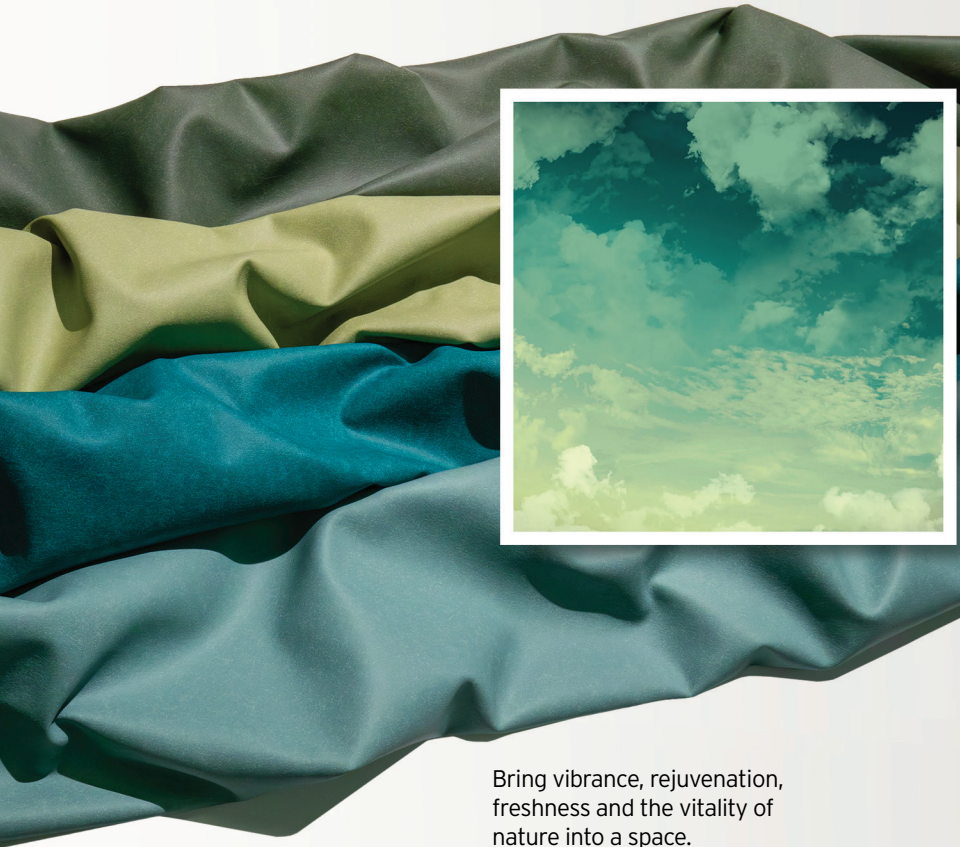
Infuse a space with tranquility  
and airy lightness reminiscent  
of clear skies and calm waters.

**604-2814**  
Navy Blazer

**604-2815**  
Faded Denim

**604-0024**  
Antique Lace

# Canopy Skies



Bring vibrance, rejuvenation,  
freshness and the vitality of  
nature into a space.

**604-4371**  
Olive Drab

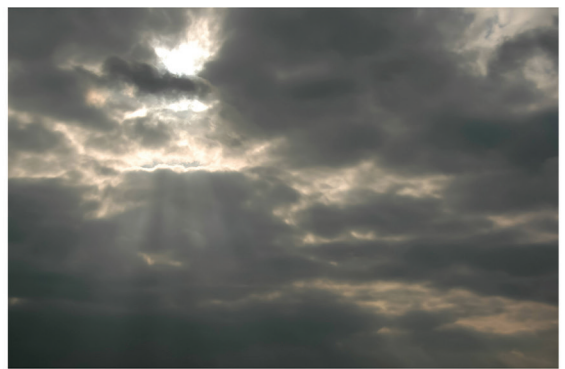
**604-4370**  
Icy Pear

**604-7248**  
Ocean Teal

**604-7247**  
Cloud Green

# Cloudy Taupes

Create an understated elegance, offering a cozy ambiance that feels grounded and welcoming.



**604-4023**  
Granola

**604-5388**  
Stone Gray

**604-5385**  
Mourning Dove

# Stormy Grays

Bring depth and intensity to a space while maintaining a sense of modern sophistication.



**604-5386**  
Black Crow

**604-5390**  
Tungsten

**604-5389**  
Outer Space

**604-5387**  
Silver Charm

# Conscious Comfort

A piece of light-colored, possibly white or light grey, fabric is draped over a thick, weathered wooden branch. The background is a clear blue sky with soft, white clouds. The fabric has a smooth texture and is folded in a way that creates soft shadows and highlights, emphasizing its drape and texture. The wooden branch is horizontal and runs across the upper middle of the frame.

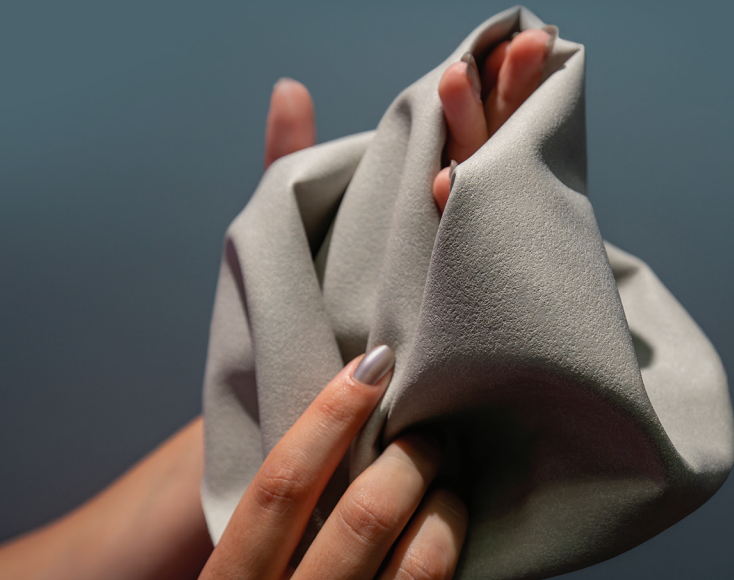
Embrace the future of upholstery with a sustainable material that breathes, moves, and inspires. Ellora's backcloth is made with recycled polyester, with each yard containing approximately 8 plastic water bottles.

## Sustainable Attributes:

- 01 PFAS-free
- 02 REACH Compliant
- 03 Free of FR, PVC, plasticizer phthalates, formaldehyde, and other harmful substances
- 04 SCS Indoor Advantage Gold certified for low VOCs, promoting healthier indoor air quality
- 05 Does not contain red list chemicals

## Key Performance Attributes:

- 01 **Breathable Technology:** Proprietary ventilation system allows air to circulate, providing both seated comfort and sound absorption for acoustic applications.
- 02 **Superior Durability:** Industry-leading 16 weeks hydrolysis results.
- 03 **Durable & Sustainable:** Engineered with longevity in mind, Ellora is built to withstand the test of time while maintaining its pristine appearance.
- 04 **Soft and Supple Texture:** Retains performance while offering a gentle touch.
- 05 **Easy Maintenance:** Withstands commonly used cleaners, disinfectants, and bleach/water solutions.



Touch  
the Future<sup>®</sup>



[ultrafabricsinc.com](http://ultrafabricsinc.com)

