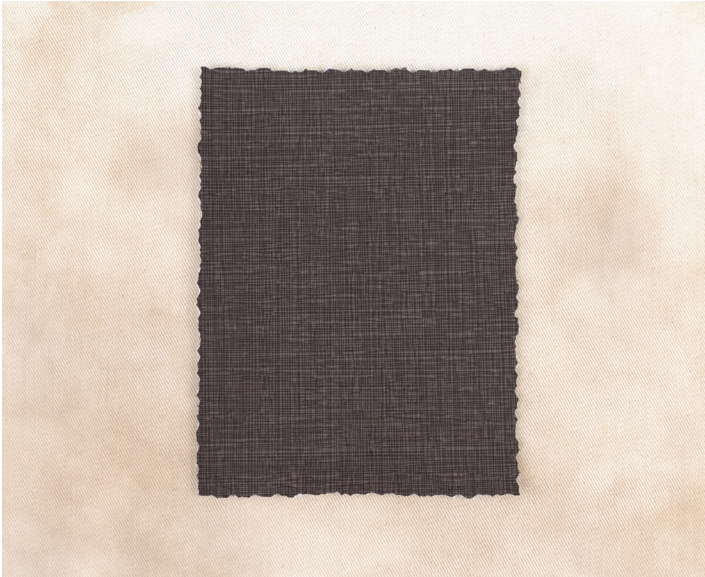


Lino — Uf Select®



Uf Select features artist-inspired colors, patterns, and textures backed by the quality and performance of Ultrafabrics. Crafted in collaboration with our North American partner mill, it offers price-conscious products with shorter turnaround times.

Inspired by finely-cut linoleum printing, **Lino** emulates a textile weave with its refined crosshatch design. Its textural aesthetic is brought to life through an assortment of foundational neutrals and on-trend colors ranging from classic blues to fresh greens that pop.

- 01** Artisanal quality that honors handicraft techniques
- 02** Crafted in North America
- 03** Balances comfort, durability, and price
- 04** Polycarbonate blend provides excellent durability
- 05** Easy cleaning and care
- 06** PFAS free
- 07** No FR additives
- 08** REACH compliant
- 09** 10 weeks hydrolysis resistance
- 10** 200,000 double rubs (Wyzenbeek), 150,000 rubs (Martindale)
- 11** Bleach cleanable (1:5 bleach/water solution)

Lino — Uf Select®

Application Interior Upholstery

General Specifications

Composition Polycarbonate Blended Surface | 65% Polyester, 35% Cotton Backing

Weight Approx. 12.53 oz. Per Square Yard | Approx. 425 Grams Per Square Metre

Thickness Approx. 0.95 Millimetres

Width 54 Inches | 137 Centimetres

Repeat None

Performance

Abrasion ASTM D4157 / 200,000 Double Rubs (Wyzenbeek)* | BS EN ISO 12947-2 / 150,000 Rubs (Martindale)*
*meets or exceeds

Hydrolysis 10 Weeks | ASTM D3690 Sect. 6.11 (Hydrolytic Stability) | ISO 1419 Method C (Accelerated Ageing)

Adhesion of Coating ASTM D751

Tear Strength ASTM D2261

Breaking Strength ASTM D5034

Tensile Strength BS EN ISO 1421

Colorfastness

Light Fastness AATCC 16.3, 200 Hours, Grade 4 | ISO 105 B02, Grade 6

Crocking AATCC 8, Grade 4-5 Wet & Dry

Flammability Requirements

ASTM E84 (Adhered) - Class A | CA TB 117-2013 - Pass | FMVSS 302 & 95/28 Annex IV - Pass | NFPA 260 - Class 1 | UFAC - Class 1 | CA AB 2998

These fabrics, when treated and/or used with other compatible furniture components, have been shown to perform under the fire test conditions of:
BS 5852 Source 0, 1 & 5 (Cig, Match & Crib 5) | BS EN 1021 Part 1 & 2 (Cig & Match)

For more information on our fabrics, cleaning and care instructions, please visit our website.