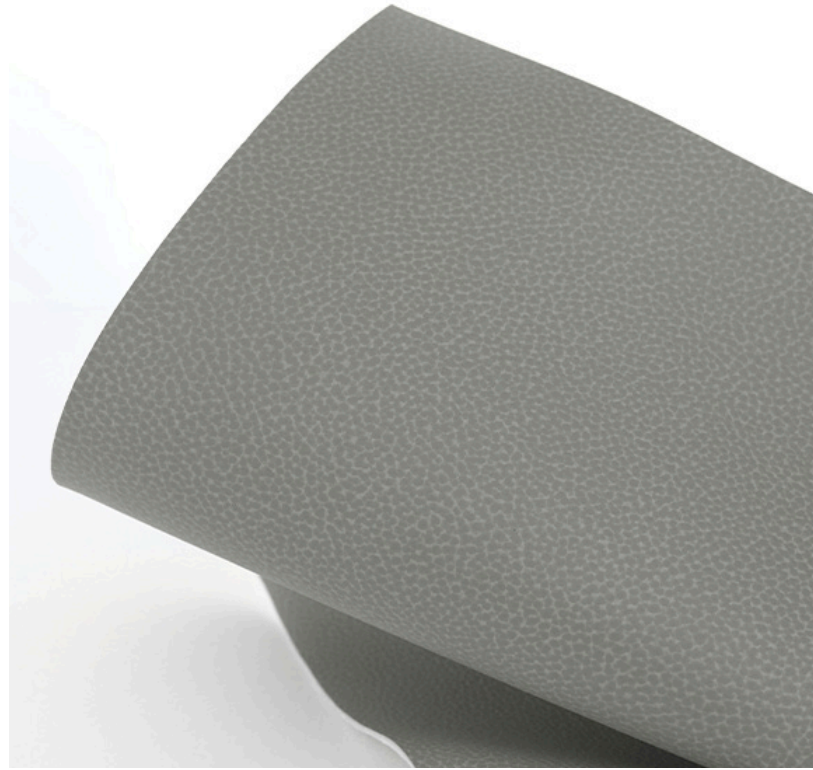


Reef Pro — Ultrafabrics

Reef Pro combines powerful performance with a sophisticated sensorial experience. Inspired by the natural beauty of sea coral, Reef Pro features an understated two-tone texture in a range of fresh shades. Added features include our renowned Ink & Stain Resistant solution proven to resist stubborn stains across a variety of markets.



-
- Superior durability – industry-leading 14+ weeks hydrolysis results
 - Twill backcloth for durable upholstery capabilities
 - 400,000 double rubs (Wyzenbeek), 200,000 rubs (Martindale)
 - Enhanced resistance to tough stains including ballpoint pen, denim dye and ketchup
 - Bleach cleanable (1:5 bleach/water solution)
 - SCS Indoor Advantage Gold Certification
 - MindClick Sustainability Assessment Program Achiever

An intelligent solution – the Ultrafabrics family of performance fabrics highlights boundary-pushing innovation where looks, feel and performance matter.



Reef Pro from Ultrafabrics

Application

Interior Upholstery

General Specifications

Composition:

100% Polycarbonate Polyurethane Surface

65% Polyester, 35% Rayon Backing

Weight:

Approx. 12.1 oz. Per Square Yard

Approx. 410 Grams Per Square Metre

Thickness:

Approx. 1.15 Millimetres

Width:

54 Inches / 137 Centimetres

Repeat:

None

Performance

Abrasion:

ASTM D4157 / 400,000 Double Rubs (Wyzenbeek)*

BS EN ISO 12947-2 / 200,000 Rubs (Martindale)*

*meets or exceeds

Hydrolysis:

14+ Weeks

ASTM D3690 Sect. 6.11 (Hydrolytic Stability)

ISO 1419 Method C (Accelerated Ageing)

Adhesion of Coating: ASTM D751

Tear Strength: ASTM D2261

Breaking Strength: ASTM D5034

Tensile Strength: BS EN ISO 1421

Colorfastness

Light: AATCC 16.3, 200 Hours, Grade 4

ISO 105 B02, Grade 6

Crocking: AATCC 8, Grade 4-5 Wet & Dry

Flammability Requirements

- ASTM E84 (Adhered) - Class A
- CA TB 117-2013 - Pass
- FMVSS 302 & 95/28 Annex IV - Pass
- NFPA 260 - Class 1
- UFAC - Class 1

These fabrics, when treated and/or used with other compatible furniture components, have been shown to perform under the fire test conditions of:

- ASTM E84 (Unadhered)
- IMO FTPC Part 8
- BS EN 1021 Parts 1 & 2
- BS 5852 Source 0, 1 & 5 (Cig, Match & Crib 5)

Reef Pro Resists:

- Ballpoint ink
- Blood
- Mustard and Ketchup
- Betadine
- Denim*
- Red Wine

* Removal of denim dye may vary depending on the period of time the stain sets in. While Reef Pro offers excellent protection, full removal is not guaranteed.

For more information on certifications and standards, sustainability, as well as cleaning and care instructions, please visit our website.



ultrafabricsinc.com
Ultrafabrics® and logo are registered trademarks of
Ultrafabrics Inc. Made in Japan.
9/22

